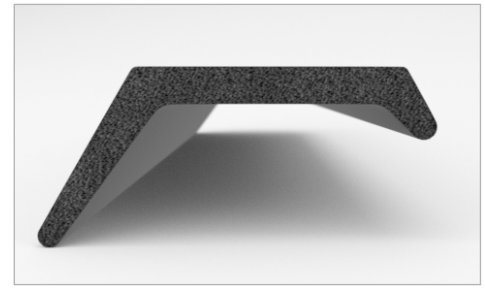
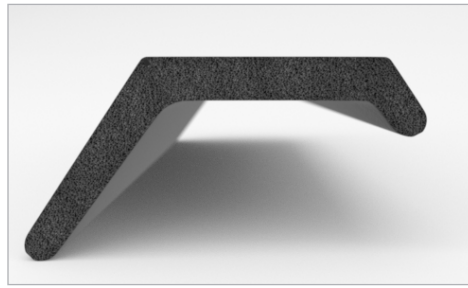


CATALOG PARTS

GARAGE DOOR WEATHERSTRIPS

EFFECTIVE, TROUBLE-FREE WEATHERSTRIPPING AND THRESHOLDS

The original weatherstrip for the bottom of wood and steel overhead garage doors, Cooper Standard Industrial and Specialty Group (ISG)'s StanStrip® is used on tens of thousands of overhead garage doors throughout North America. Our sponge unicell and dense EPDM rubber materials provide a shock-absorbing seal that keeps out weather, pests and dirt while cushioning the impact of a closing garage door. To ensure a complete garage door seal, our Garage Door Thresholds also keep the elements out and keep garage interiors cleaner.



APPLICATIONS

- Garage Doors
- Garage Floors

MARKETS SERVED

- Marine
- Construction
- Garage Door Installation

AVAILABLE PRODUCTS

- StanStrip® (EPDM Dense Rubber Compound)
- Unicell (Premium Quality Astragal Sponge Rubber)
- Garage Door Threshold (EPDM Dense Rubber Compound*)

ADDITIONAL BENEFITS

- Quick and Easy to Install
- Keeps out Weather, Dirt and Pests
- Stays Soft even During Temperature Extremes
- Tough Exterior and Long-lasting Material Reduce Customer Complaints
- Inventory for Immediate Shipment
- Stays Where it is Installed and Will Not Crack, Move or Shatter

**Needs to be glued to the garage floor using a heavy-duty adhesive.*



Scan the QR Code to Contact Us