

# CATALOG PARTS

## QUICK CONNECTS

### DUAL O-RING SEALING WITH EASY, ECONOMICAL ASSEMBLY

Cooper Standard Industrial and Specialty Group (ISG)'s Quick Connects offer the positive assurance of dual o-ring sealing in a simple push together assembly. Our connectors provide a durable, high-performance coupling for fluid systems connections. Cooper Standard ISG's Quick Connects meet and even exceed the performance requirements of SAEJ2044 that defines the tube end form dimensions to guarantee compatibility between same size connectors and the standard end form.



#### APPLICATIONS

- Supply and Return Lines
- Vapor Lines

#### MARKETS SERVED

- Automotive
- Marine
- Recreational Vehicles
- Transportation

#### HOUSING MATERIALS

- Aluminum
- Low Carbon Steel
- PA 6/6
- PA66GF30
- PPA
- Stainless Steel and Hybrid

#### CONFIGURATIONS

- 45°
- 90°
- 180° (straight)

#### ADDITIONAL BENEFITS

- Replace Threaded or Clamped Fittings
- Single Push or Push and Latch Provides Ease of Assembly and Reduces Labor Time
- Minimal Effort is Required to Complete the Positive Snap Action Lock and Seal

*See second page for Quick Connector Family.*

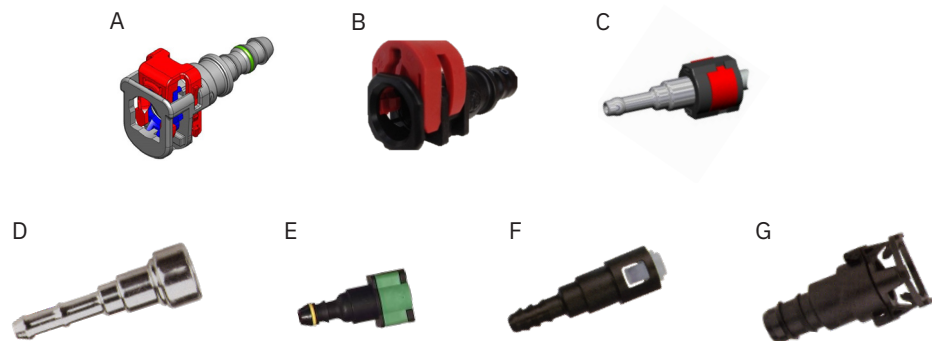


Scan the QR Code to Contact Us

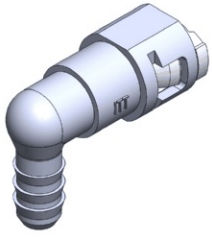
# CATALOG PARTS

## QUICK CONNECTOR FAMILY

Family		Retainer Function	Benefits
A	Gen III Posi-Lock™	Double-lock	Most Robust Connection
B	Gen II Posi-Lock	Side-lock	Smaller Size, Error Proofing
C	Gen I Hybrid	Side-lock	Serviceable Steel Quick Connect
D	Series 300 Steel	Single-push	Crash and Temperature
n/a	Gen I Posi-Lock	Side-lock	Large Size, False Pre-latch
E	Short-Head Posi-Lock	Side-lock	Large Size, False Pre-latch
F	Series 300 Plastic	Single-push	Retainer Damage / Fall Out
G	Squeeze-to-Release (STR)	Single-push	Weaker Retainer
n/a	Single Push	Single-push	



Scan the QR Code to Contact Us



- **Part No. : 822509**
- **Product Category : Quick Connectors**
- **Product Family : Connectors**
- Application : Fuel - Liquid
- Material Type : Plastic
- Color : White/Natural
- Conductive : Yes
- OEM Specs : GM SAE J2044
- Female Side : Endform Size/Std : 3/8" SAE
- Male Side : Stem Size : 3/8" (Plastic Tube triple barb)
- Stem/Angle Configuration : 90°
- Quick Connectors: Connection : Single push-to-lock (Series 300 Plastic)
- Quick Connectors: Number of ID Rings : 2
- OD O-ring : Yes
- Quick Connectors: Redundant Latch Available : No
- Made to Order/Stock : MTO