

# CATALOG PARTS

## QUICK CONNECTS

### DUAL O-RING SEALING WITH EASY, ECONOMICAL ASSEMBLY

Cooper Standard Industrial and Specialty Group (ISG)'s Quick Connects offer the positive assurance of dual o-ring sealing in a simple push together assembly. Our connectors provide a durable, high-performance coupling for fluid systems connections. Cooper Standard ISG's Quick Connects meet and even exceed the performance requirements of SAEJ2044 that defines the tube end form dimensions to guarantee compatibility between same size connectors and the standard end form.



#### APPLICATIONS

- Supply and Return Lines
- Vapor Lines

#### MARKETS SERVED

- Automotive
- Marine
- Recreational Vehicles
- Transportation

#### HOUSING MATERIALS

- Aluminum
- Low Carbon Steel
- PA 6/6
- PA66GF30
- PPA
- Stainless Steel and Hybrid

#### CONFIGURATIONS

- 45°
- 90°
- 180° (straight)

#### ADDITIONAL BENEFITS

- Replace Threaded or Clamped Fittings
- Single Push or Push and Latch Provides Ease of Assembly and Reduces Labor Time
- Minimal Effort is Required to Complete the Positive Snap Action Lock and Seal

*See second page for Quick Connector Family.*

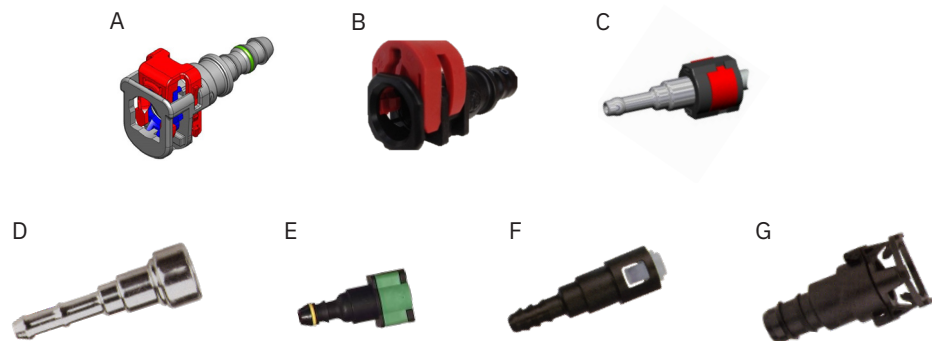


Scan the QR Code to Contact Us

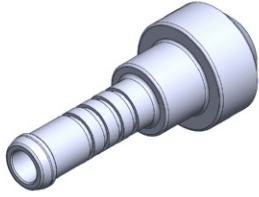
# CATALOG PARTS

## QUICK CONNECTOR FAMILY

|     | Family                   | Retainer Function | Benefits                        |
|-----|--------------------------|-------------------|---------------------------------|
| A   | Gen III Posi-Lock™       | Double-lock       | Most Robust Connection          |
| B   | Gen II Posi-Lock         | Side-lock         | Smaller Size, Error Proofing    |
| C   | Gen I Hybrid             | Side-lock         | Serviceable Steel Quick Connect |
| D   | Series 300 Steel         | Single-push       | Crash and Temperature           |
| n/a | Gen I Posi-Lock          | Side-lock         | Large Size, False Pre-latch     |
| E   | Short-Head Posi-Lock     | Side-lock         | Large Size, False Pre-latch     |
| F   | Series 300 Plastic       | Single-push       | Retainer Damage / Fall Out      |
| G   | Squeeze-to-Release (STR) | Single-push       | Weaker Retainer                 |
| n/a | Single Push              | Single-push       |                                 |



Scan the QR Code to Contact Us



- **Part No. : 163694**
- **Product Category : Quick Connectors**
- **Product Family : Connectors**
- Application : Trans-Oil, Engine Oil
- Material Type : Aluminum
- Color : Black
- Conductive : Yes
- OEM Specs : CSA
- Female Side : Endform Size/Std : 3/8" CS Custom
- Male Side : 3/8" (Hose - Roll Groove)
- Stem/Angle Configuration : 180°
- Quick Connectors: Connection : Single push-to-lock (Gen II - Collet)
- Quick Connectors: Number of ID Rings : 1
- OD O-ring : Yes
- Quick Connectors: Redundant Latch Available : No
- Made to Order/Stock : MTO